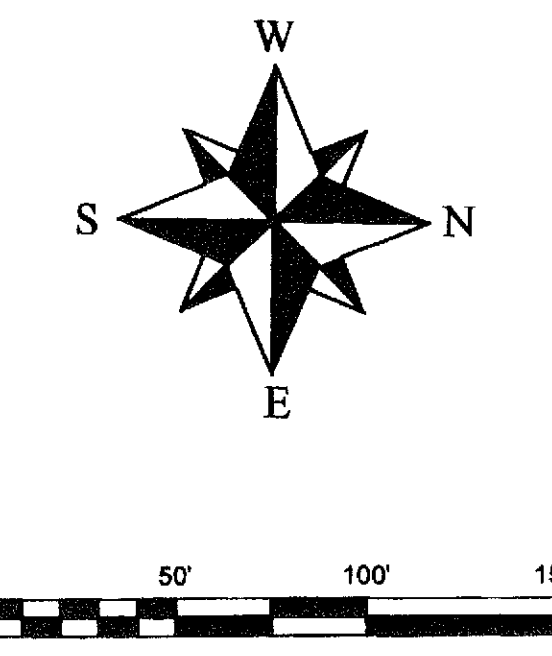


# FAITH FARM MINISTRIES BOYNTON BEACH CAMPUS

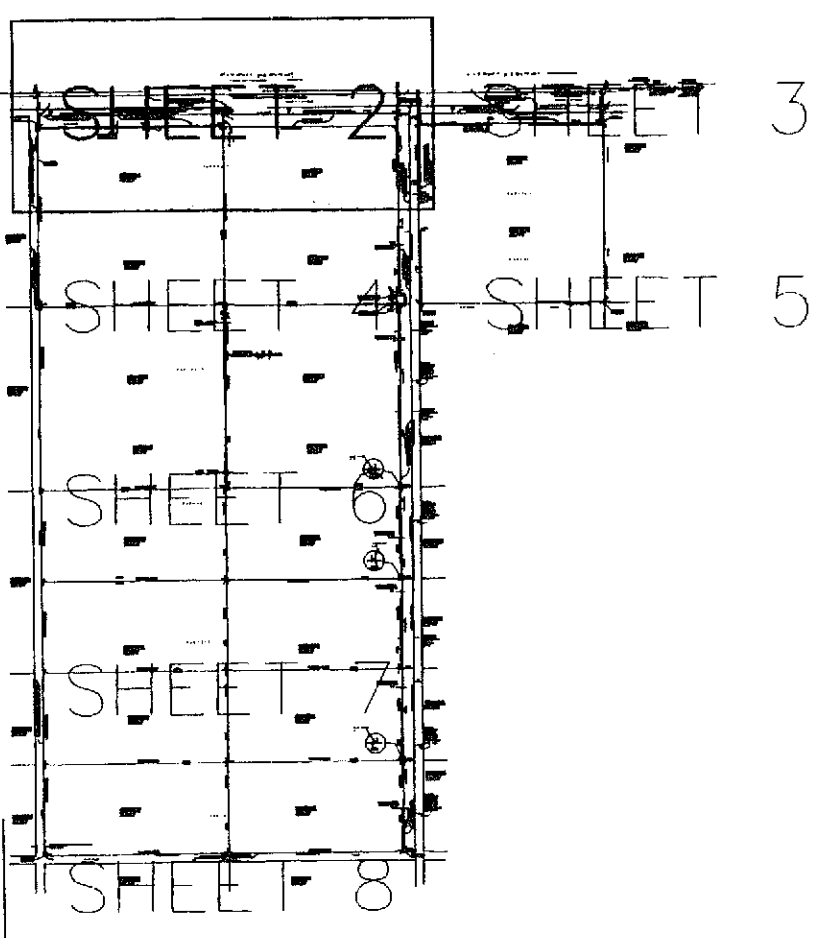
A PORTION OF TRACTS 45, AND 67 THROUGH 78, BLOCK 51, PALM BEACH FARMS COMPANY, PLAT No. 3, PLAT BOOK 2, PAGE 45, PUBLIC RECORDS OF PALM BEACH COUNTY, FLORIDA.  
BEING IN SECTION 19, TOWNSHIP 45 SOUTH, RANGE 42 EAST, PALM BEACH COUNTY FLORIDA  
MARCH 2009

SHEET 2 OF 8



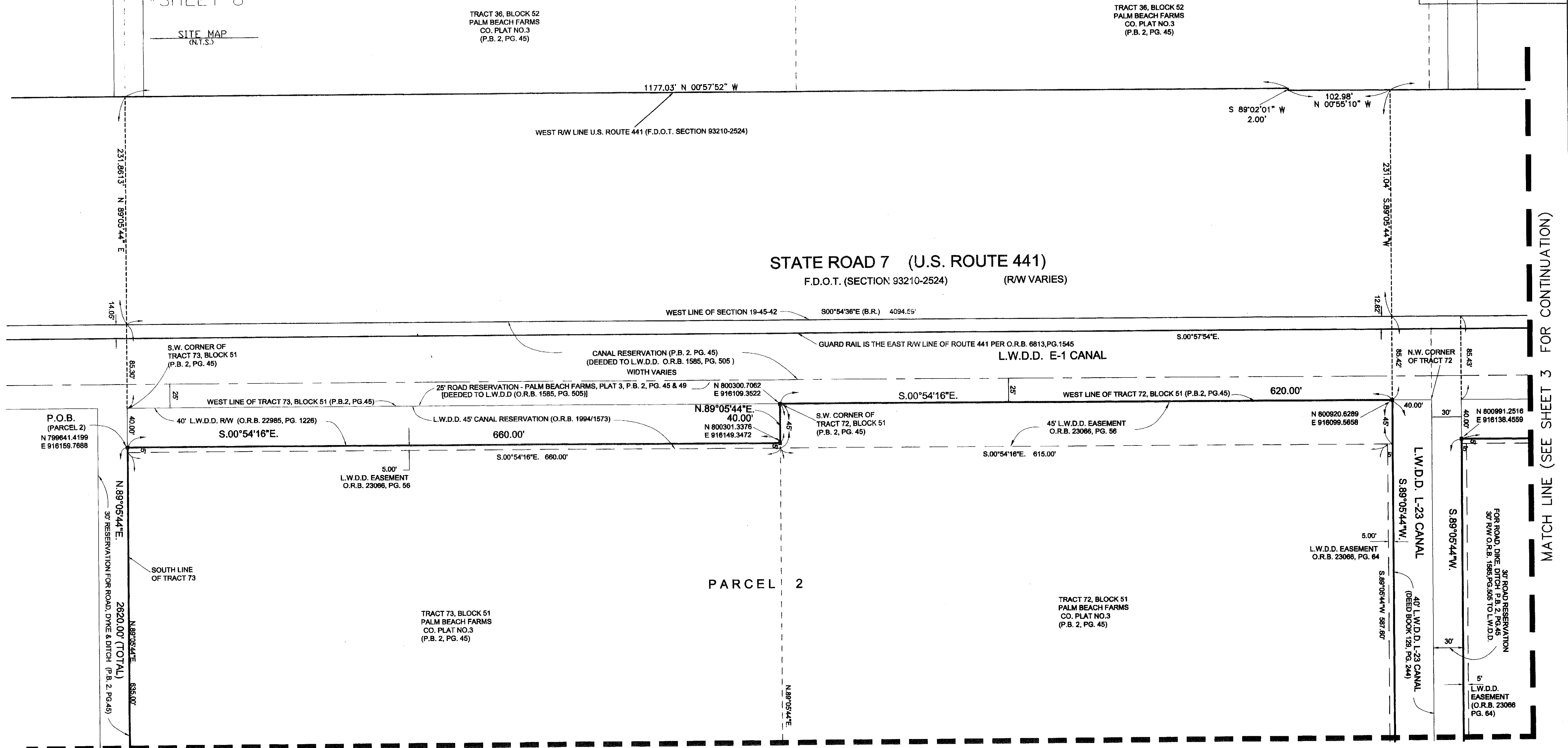
## 58

STATE OF FLORIDA  
COUNTY OF PALM BEACH  
THIS PLAT WAS FILED FOR  
RECORD AT \_\_\_\_\_ M. THIS  
\_\_\_\_\_ DAY OF \_\_\_\_\_  
2009 AND DULY RECORDED  
IN PLAT BOOK No. \_\_\_\_\_  
ON PAGES \_\_\_\_\_  
THROUGH \_\_\_\_\_  
SHARON R. BOCK  
CLERK & COMPTROLLER - PALM  
BEACH COUNTY  
BY \_\_\_\_\_  
D.C.



TRACT 36, BLOCK 52  
PALM BEACH FARMS  
CO. PLAT NO.3  
(P.B. 2, PG. 45)

TRACT 36, BLOCK 52  
PALM BEACH FARMS  
CO. PLAT NO.3  
(P.B. 2, PG. 45)



MATCH LINE (SEE SHEET 3 FOR CONTINUATION)

SCALE 1" = 50'	<b>MILLER LAND SURVEYING</b> 1121 LAKE AVE. LAKE WORTH, FLORIDA 33460 PHONE: (561) 586-2999 FAX: (561) 582-0151 www.MillerSurveying.com	REFERENCES BB-14-67 JOB NO. Y070423-PLAT L-1705-A
DR. EVANS	FIELD M.M.	
DATE MARCH 2009		